

## TUNA PARK ATAŞEHİR

TURKEY / ISTANBUL / ATAŞEHİR

**Project Status:**  
Completed

**Price Range:**  
448,000 - 1,127,000 \$

**Development Area:**  
16,000 m<sup>2</sup>



### Ataşehir Residence



BRN  
BRN MİMARLIK İNŞAAT PROJELERİ YÖNETİM HİZMETLERİ SAN. TİC. LTD. ŞTİ.



**REALTY GALAXY**  
Yavuz Sultan Selim Bulvarı  
İstanbul / Büyükçekmece / Büyükçekmece  
Phone:+90 542-811 80 80  
Mobile Phone:+90 533-382 39 79



**İsmail Can**  
Broker / Owner  
Mobile Phone:+90 542-811 80 80  
Phone:+90 542-811 80 80

Opportunity | New | For Investment |

## Elevate Your Lifestyle in Istanbul's Prime District

Located in the vibrant Kozyatağı neighborhood of Ataşehir, Istanbul, Tuna Park Ataşehir by Tuna Construction offers an extraordinary opportunity for modern urban living with stunning views of the islands, sea, city, forest, and Çamlıca. This expansive project, covering 16,000 m<sup>2</sup>, redefines comfort and convenience with high-quality design, ideal amenities, and excellent connectivity to Istanbul's business, shopping, and cultural centers.

### Project Overview

Tuna Park Ataşehir features 146 units in total, including 141 residential apartments and 5 commercial units. Designed to meet diverse lifestyle needs, the apartments are available in spacious layouts of:

- 2+1: Perfect for young professionals or small families seeking convenience and style.
- 3+1: Ideal for families needing additional space without compromising on modern comforts.
- 4+1: Tailored for larger families or those desiring expansive living areas with sophisticated details.

Building Structure:

- Block A: 22 floors

- Block B: 32 floors

With completion set in a prime Istanbul district, Tuna Park Ataşehir promises a refined urban lifestyle with unparalleled views and top-notch amenities.

### Prime Location in Ataşehir

Kozyatağı, in the heart of Ataşehir, is a strategic location that connects residents to major transportation routes, business centers, and entertainment hubs. Tuna Park Ataşehir is surrounded by multiple transport options, including the Kozyatağı Metro (450 m), D-100 Highway (2 min), and Marmaray (10 min), providing swift access to all parts of Istanbul. The neighborhood's proximity to key destinations like Kadıköy, Ataşehir Financial Center, and both the 15 Temmuz and Fatih Sultan Mehmet Bridges makes it an ideal spot for those balancing business with leisure.

### Modern Living Spaces with Panoramic Views

Each unit in Tuna Park Ataşehir is crafted to offer a luxurious living experience complemented by magnificent views of Istanbul's iconic landscapes, including islands, sea, city, forest, and Çamlıca Hill. The project's design brings nature closer with expansive windows, spacious balconies, and open layouts that highlight natural light and scenic beauty.

### Exceptional Amenities for a Refined Lifestyle

Tuna Park Ataşehir offers an array of upscale amenities designed to enhance residents' quality of life. These include:

- Decorative Pools: Adding beauty and tranquility to the community atmosphere.
- Walking Areas and Rest Benches: Perfect for relaxation and casual strolls within a serene environment.
- 24-Hour Security System: A comprehensive camera system ensures residents' safety and peace of mind.
- Parking Garage and Warehouse Areas: Providing secure and convenient storage solutions.
- Green Park and Landscaped Gardens: Ideal for outdoor activities, socializing, and enjoying nature.

### Nearby Destinations for Shopping, Healthcare, and Education

Shopping Centers: Tuna Park Ataşehir is close to Istanbul's premier shopping destinations such as City's Istanbul (5 min), Metropol (10 min), Emaar Square (10 min), and the iconic Bagdat Street (15 min), offering residents a wide selection of retail, dining, and entertainment options.

Hospitals: Access to healthcare is easy with several well-known hospitals nearby, including Central Hospital, Memorial Ataşehir, and Acibadem Ataşehir Hospital.

Universities: The project is located near some of Istanbul's top universities, such as Acibadem University, Yeditepe University, and Bahçeşehir University, providing educational convenience for families.

Tuna Park Ataşehir embodies modern urban living, combining luxury, convenience, and breathtaking views in a location that connects residents with the best of Istanbul. Constructed with the finest materials, this project offers high-quality apartments and amenities that cater to a sophisticated lifestyle. For those seeking a blend of comfort, elegance, and excellent investment potential, Tuna Park Ataşehir is an exceptional choice in Istanbul's dynamic cityscape.

### LOCATION :

By Street,

### ENVIRONMENT :

Bank, Entertainment Center, Firefighting, Coiffure & Beauty Center, High School, School (Education facility), Patisserie & Bakery, Polyclinic, Police Station, Post Office, Restaurant, Health Center, Veterinary, Movie Theater,

### INFRASTRUCTURE :

Earthquake Regulation Proof, Earthquake Resistant,

### CONSTRUCTION PROPERTIES :

Heat Proofing, Sound Isolation,

### FACILITY ACTIVITIES :

Social Facility, Jogging / Walking Areas,

ESTATE TYPES



448,000 \$

117 m<sup>2</sup> , 2 + 1  
For Sale, Apartment



698,000 \$

186 m<sup>2</sup> , 3 + 1  
For Sale, Apartment



1,127,000 \$

216 m<sup>2</sup> , 4 + 1  
For Sale, Apartment



Ataşehir Residence



BRN

Ataşehir Residence



BRN

Ataşehir Residence



BRN

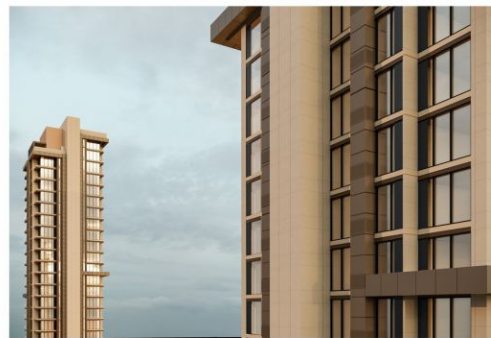


Ataşehir Residence



BRN

Ataşehir Residence



BRN